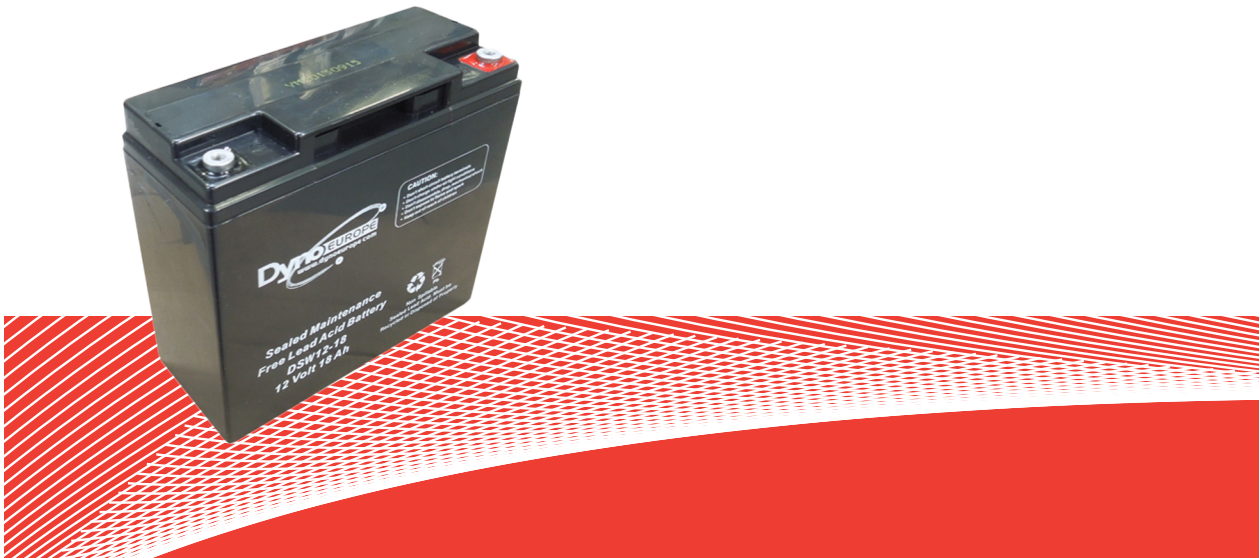


TECHNICAL DATA SHEET

DSW12-18



General Series

DSW-Series Valve Regulated Lead Acid batteries are designed with AGM (Absorbent Glass Mat) technology, high performance plates and electrolyte to gain extra power output for common power backup system applications widely used in the field of UPS, Emergency Lighting System.

Application

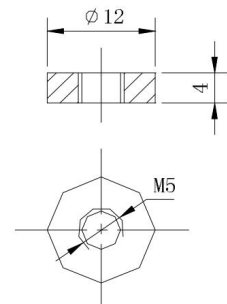
- | | |
|---|--|
| <input checked="" type="checkbox"/> Alarm System | <input checked="" type="checkbox"/> Medical Equipment |
| <input checked="" type="checkbox"/> Cable Television | <input checked="" type="checkbox"/> UPS |
| <input checked="" type="checkbox"/> Communication Equipment | <input checked="" type="checkbox"/> Power tools |
| <input checked="" type="checkbox"/> Control Equipment | <input checked="" type="checkbox"/> Emergency Power System |
| <input checked="" type="checkbox"/> Security System | <input checked="" type="checkbox"/> Toys |

General Features

- Sealed and maintenance free operation.
- Non-Spillable construction design.
- ABS containers and covers(UL94HB, UL94V-0) optional.
- Safety valve installation for explosion proof.
- High quality and high reliability.
- Exceptional deep discharge recovery performance.
- Low self discharge characteristic.
- Flexibility design for multiple install positions.

Construction

- | | |
|---|--|
| <input checked="" type="checkbox"/> ComponentRaw material | <input checked="" type="checkbox"/> SealantEpoxy Resin |
| <input checked="" type="checkbox"/> PositiveLead dioxide | <input checked="" type="checkbox"/> Safety valveEPDR |
| <input checked="" type="checkbox"/> NegativeLead | <input checked="" type="checkbox"/> TerminalCopper |
| <input checked="" type="checkbox"/> ContainerABS | <input checked="" type="checkbox"/> SeparatorFiber glass |
| <input checked="" type="checkbox"/> CoverABS | <input checked="" type="checkbox"/> ElectrolyteSulfuric acid |



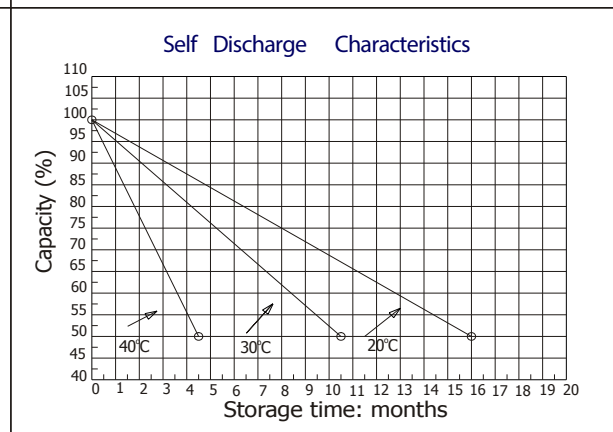
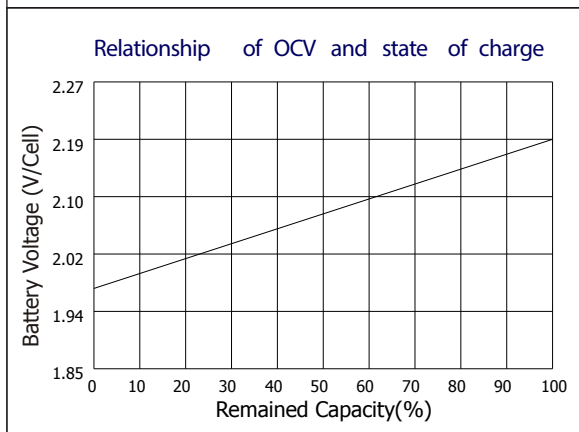
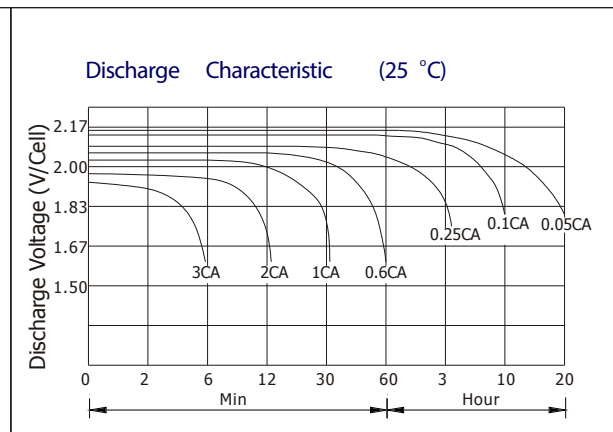
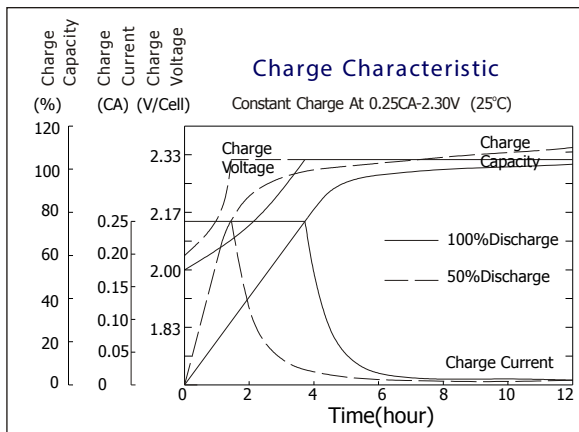
Terminal Dimensions

TECHNICAL DATA SHEET

DSW12-18

Battery Model	DSW12-18			
Designed Floating Life	5 Years			
Capacity(25°C)	20HR(0.9A,1.75V)	10HR(1.7A,1.75V)	5HR(3A,1.75V)	1HR(12A,1.75V)
	18AH	17AH	15AH	12AH
Dimensions	Length	Width	Height	Total Height
	181mm(7.13inch)	76mm(2.99inch)	167mm(6.57inch)	167mm(6.57inch)

Internal Resistance	Full charged at 25°C: 0.012 Ohm			
Self Discharge	3% of capacity declined per month at (25°C)			
Capacity Affected by Temp.(20HR)	40°C	25°C	0°C	-15°C
	102%	100%	85%	65%
Charge Voltage(25°C)	Cycle use		Float use	
	14.4-15V(-30mV/ °C), max. Current: 5.4A		13.6-13.8V(-20mV/ °C)	



TECHNICAL DATA SHEET

DSW12-18

Constant current discharge ratings-amperes at 25 °C

F.V/Time	5MIN	10MIN	15MIN	30MIN	1HR	3HR	5HR	10HR	20HR
1.60V	70.3	43.8	33.0	20.1	12.8	5.62	3.43	1.92	1.01
1.67V	66.0	41.5	31.8	19.3	12.6	5.40	3.36	1.90	0.97
1.70V	60.5	40.0	31.0	17.5	12.2	5.04	3.29	1.89	0.96
1.75V	59.3	38.8	30.0	16.6	11.7	4.87	3.22	1.84	0.93
1.80V	53.0	37.0	27.3	15.4	10.9	4.68	3.02	1.81	0.91
1.85V	46.8	35.3	24.5	14.2	10.2	4.51	2.83	1.76	0.88

Constant power discharge ratings-watts at 25 °C

F.V/Time	5MIN	10MIN	15MIN	30MIN	1HR	3HR	5HR	10HR	20HR
1.60V	123	79.0	60.3	36.3	23.1	9.96	5.80	3.84	2.02
1.67V	119	77.0	59.5	35.5	22.9	9.65	5.78	3.82	1.94
1.70V	112	76.3	59.0	33.3	22.5	9.22	5.70	3.80	1.92
1.75V	113	76.0	58.5	32.3	22.1	9.00	5.65	3.72	1.87
1.80V	103	74.9	54.3	30.8	20.9	8.74	5.48	3.64	1.82
1.85V	93.6	71.0	49.2	28.8	19.6	8.47	5.30	3.50	1.75