

TECHNICAL DATA SHEET

9.575.1

Applications



CYCLIC



SOLAR



MARINE

Electrical specification

Voltage:	<input type="text" value="12V"/>	(V)
Capacity C20:	<input type="text" value="90"/>	(Ah)
Capacity C5:	<input type="text" value="80"/>	(Ah)
RC:	<input type="text" value="160"/>	(min)

Mechanical specification

Dimensional group:	<input type="text" value="-"/>	EN50342-2:2007
ETN reference:	<input type="text" value="957 051 000"/>	
DIN reference:	<input type="text" value="95751"/>	
Sizes:	<input type="text" value="353x175x190"/>	(L x W x H)
Cell Layout:	<input type="text" value="0"/>	
Terminal Type:	<input type="text" value="1"/>	

Container

<u>Case</u>	Material	<input type="text" value="POLYPROPYLENE"/>	Colour	<input type="text" value="BLACK"/>
	Bottom hold down	<input type="text" value="B3"/>	Handles	<input type="text" value="-"/>
<u>Lid</u>	Material	<input type="text" value="POLYPROPYLENE"/>	Colour	<input type="text" value="BLACK"/>
	Cover design	<input type="text" value="KAMINA"/>	Handles	<input type="text" value="BLACK"/>
<u>Vent cap</u>	Material	<input type="text" value="POLYPROPYLENE"/>	Colour	<input type="text" value="BLACK"/>
	Type	<input type="text" value="KAMINA"/>		

Test details

Vibration resistance:

Endurance resistance:

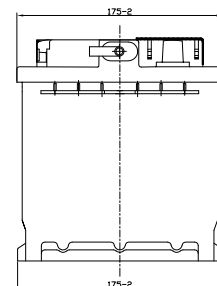
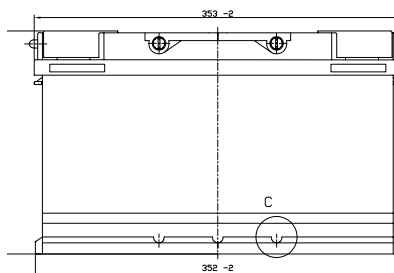
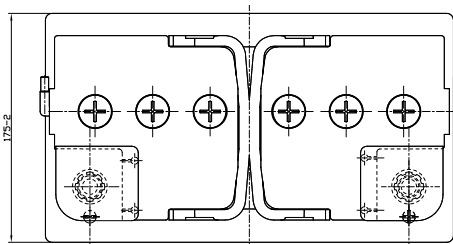
Separator:

Type:

Battery weight: ± 1.00 (Kg)

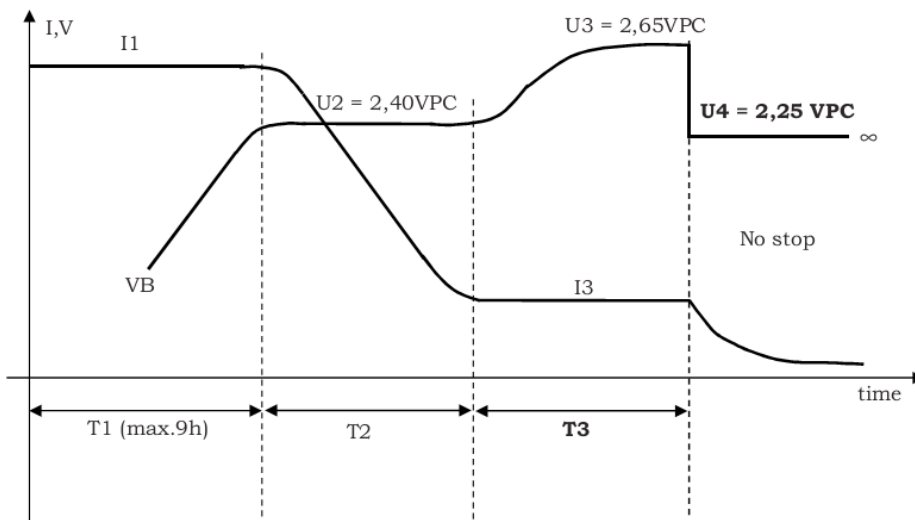
Acid weight: ± 0.50 (Kg)

Total battery weight: ± 1.50 (Kg)



Charging

Suggested Charging current	25A WA 20 IU1A
Operating Temperature	-20°C / 45°C
Storage Temperature	-20°C / 40°C
Cycle nr.	600



Duur: T1 + T2: De duur van de eerste twee fases is hoogstens 14u

Duur: T3: De duur T3 is gelijk aan de duur van de hoofdlading, dat is $t_3 = t_1 + t_2$, maar met een minimum van 1 tot 4h

T1 + T2 [h]	< 1	2	3	4	> 4
T3 [h]	1	2	3	4	4